

THE CORNERSTONE

2023 Fall Newsletter

Wesley Foundation at Purdue



A message from the President of the Board of Directors

My dear Wesley friends,

I am Angel Valentín, the new President of the Board of Directors of Wesley Foundation at Purdue University. I joined the Wesley Board last year, in the Summer of 2022, having previously worked as the Wesley intern (for 18 months) several years earlier.

Wesley is a special place to me, as it has been to countless Purdue students throughout the last hundred years. It is where I've made lifelong friendships and where I met my beautiful fiancée, Apoorva.

These connections that generations of students have built with other students, with Wesley staff, with our community, our partner churches, and with God: that is what makes Wesley so special. During my time as the Wesley intern, I helped our staff fundraise to build our new deck, which required us to reach out to partner churches, supporters, and alumni. I also worked with Pastor Wellington and others to increase our outreach to international students (see Pastor Wellington's note on the next page to find out more about this work); and I worked with Pastor Glen and our student leaders to strengthen student participation before and during the COVID-19 pandemic.

The work that our staff and students have carried out throughout the years has allowed Wesley Foundation to remain a vibrant community in the middle of Purdue's campus. As a Board of Directors, we have taken on the challenge of making sure that we position Wesley Foundation for continued success over the next hundred years. As we continue to work towards moving from our historic location to our new home closer to all of the freshmen residence halls (see Pastor Glen's letter on p. 8 for more details), our Staff and our Board of Directors will continue to rely on and build on the many connections, friendships, and partnerships we've made throughout the years to make this move a success.

I hope that in this newsletter you're able to see the connections that our students and staff are continuing to make and strengthen throughout the last several months; and that whether you're a current student, parent, alum, or supporter, you'll be able to reminisce on the connections you have built because of Wesley.

**Grace and Peace,
Angel Valentín**



Meet our New Staff

Pastor Janelle

Hello my name is Janelle Ohlemiller, I graduated from Purdue University with a Bachelor's degree in Psychology and I got my Masters in Social Work from the University of Chicago. My call to ministry came to me as what I can only describe as a prophetic frustration. I was working as a case manager in the Chicago suburbs. I had too many clients and I was giving them too little help. I really felt like that was just not okay. It's not what I wanted to do. I didn't want to be a part of a system that's so harmful to people. My best friend at that time was the intern at the Wesley foundation, Jake Ohlemiller, who is now my husband! I was leaning on him a lot in that year and just trying to figure out what's what. He was very kind to me and sent me all kinds of information. From podcasts, videos, and all kinds of books so I could explore. That is how I became a Christian and eventually led me to be ordained a Deacon in the United Methodist Church. I met Pastor Glen through Jake as well! He came to our wedding. I've known him now for a really long time. Pastor Glen started trying to recruit me to Wesley staff about five years ago and I am thrilled that we can finally make that happen. In joining the Wesley staff, I would like to normalize having mental health concerns and find ways to connect people with resources. In addition I want to be there to support and help our students, including pastoral care when those needs arise. I want to be there especially for students who might like either a female pastoral perspective or what a trained therapist can provide. I really want to be available for students in need. I'm excited for my journey here!



Pastor Wellington Chiomadzi

Hello my name is Pastor Wellington! I am originally from Zimbabwe but I came to the States in 2017 to undertake my graduate studies at Garrett Evangelical Theological Seminary in Evanston, Illinois. I graduated in 2019 with a masters in Evangelism and Spiritual Formation. After which I got an offer to work at Wesley Foundation at Purdue! I worked here for two years and then I went into Pastoral Ministry full-time with the United Methodist Church in Indiana for two years. Now I am back at Wesley and starting a new community in the greater Lafayette area! I discerned the best way to reach out in the community was to be accommodated at Wesley. So I'll be here for the unforeseeable future. As you might have read I am not new to Wesley, I was one of the first pioneers to start Global Connections program that still runs today. I'm coming back this time to start a new community called **Ubuntu** which means an African Community. This will be a gathering place for our students of African origin, as well for graduate students and graduated students that are still in the area. We want to bring back how life is practiced in Africa, gathered together and continuing to grow in community. This is something I'm very passionate about and I can't wait to bring this into our community and here at Wesley.



Photo Wall

Midnight Pancakes
(First one of the semester)



Our friends enjoying the water at Sugar Creek



Sunday Service



Students Attending Young at Heart at Grace UMC



Labor Day Canoe Trip



Friday Fellowship: Bob Ross Paint Night



Photo Wall

Midnight Pancakes with special guest Mitch Daniels



Students and Staff volunteering at Stidham UMC for our Baked Steak Fundraiser



Halloween Festivities at Wesley!



Friday Fellowship: Wesley's Show and Tell



Winterization

Winterization, an annual event organized by Wesley Foundation at Purdue, sees a massive gathering of students come together to help older residents in the Greater Lafayette area prepare their yards and home exteriors for the winter season.

This year it took place on the beautifully clear and warm morning of November 4. The number of residents we served rose above 350 (homes) for the first time since COVID. These homes were served by over 1200 student volunteers. All this was made possible because of our Winterization CREW, over 30 students and Wesley staff, who worked all semester to make this happen. CREW more than doubled in size on the day of Winterization to feed volunteers breakfast and lunch, give out housing assignments and supplies, and support the students as they served our wonderful residents. The feedback we received from residents was overwhelmingly positive. They so appreciate the hard work and dedication of the students who planned and participated in this event.

Winterization wouldn't be possible without the support of numerous clubs, fraternities, and sororities. Their involvement in this event showcases the strong sense of community and collaboration at Purdue. By participating, these organizations not only contribute to the betterment of the community but also instill valuable life lessons in their members, fostering a culture of service and compassion.

Special thanks to our 2023 co-coordinators, Sami H. and Megan S. They met nearly every week since Winterization 2022 with Pastor Glen to prepare for this year's event.

To read more about Winterization, scan the QR codes below to check out these amazing articles by Star City News



"My favorite part is seeing people I know and interact with at Purdue, come together and support a great cause"
-Kathryn A.



"One resident was especially excited to talk to someone from Wesley, because it turns out that her mom was the secretary at Wesley Foundation during the 1950s."
- Pastor Glen Robyne



Life at Wesley

Sunday Service



Winterization



Young at Heart at Grace UMC



Meet Maddie

Hello! My name is Maddie!

I came to Purdue with an open heart and an open mind. I wanted to find where I fit in here. I walked into the Wesley foundation because it seemed like an adorable little place. I went upstairs and met Pastor Glen and immediately felt a connection since he knew my Pastor from my home church. Pastor Glen and the people that I've met here have been so loving, welcoming and very inclusive of everyone. I've enjoyed every Sunday sermon and organizations/events that Wesley has held so far. I love this church and I'd call it one of my home's away from home. I can't wait to see where we go from here!

Hello! My name's Riley N!

I'm a current freshman who attends Wesley! I've been actively involved in Wesley's events since July when I first attended their 'Midnight Pancakes' event on the day I moved in. They were serving pancakes late at night for free to welcome incoming freshmen to Purdue. It struck me as a very warm and welcoming way to spread kindness to us freshmen. Whenever I go to a Wesley event, I feel welcomed and appreciated by others. It's sometimes difficult to find a group of people where you can be yourself and not worry about people's perception of you. It was through Wesley that I found the courage to start playing guitar in front of others through our Sunday services. It's also great to learn about faith from people who come from a wide range of backgrounds. I get to see where God's love is being put to work in these people's unique situations. Overall, Wesley is a fantastic place to find community and has been the closest thing to home to me since I moved to Purdue.



Meet Riley

A Letter from Pastor Glen

Dear Wesley Friends,

I am excited to share with you that after extended negotiations with Purdue University, our Board of Directors has agreed to sell our building and land at 435 W. State St. In exchange we are receiving new land at 122 Waldron St. which is just as close to Purdue's academic campus and much closer to the residence halls. In addition, the agreement gives us enough financial support to build a new similar-sized, more sustainable campus ministry building to help us carry our mission and vision forward for the next 100 years.

We are proud of our over 100 years of ministry on State Street. From this location we have done much to transform lives and the Purdue Community. In the 1930's Wesley Foundation started the co-op student living movement on campus. Later, Wesley broke the color barrier at a time when only white students were allowed to live on Purdue's campus. In the last two decades, Wesley has built up the largest service event at Purdue, Winterization.

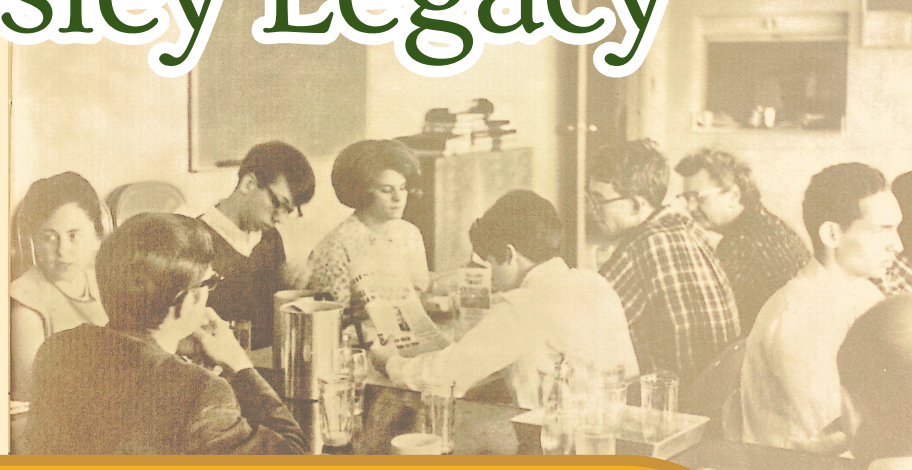
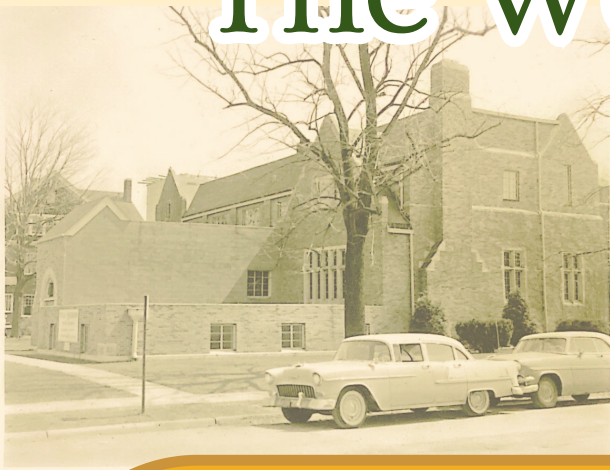
In moving, Wesley is committed to continue living out our legacy and mission. With additional fundraising, we will be able to add to the new building up to 30 beds of apartment living spaces for the ministry and for students to rent. We believe that this will provide a greater sense of community for students, as well as provide much needed affordable housing. While we are sad to leave our current and historic location, this opportunity allows us to further diversify financial income and enable our ministry to continue leading boldly by providing a substantial student community living option onsite. We believe this move sets us up for the next 100 years of ministry as a force for good on campus.

We are grateful to The Found (Baptist Student Foundation) Campus Ministry who will be graciously sharing their building at 2nd and Russell with us starting August 2024. We will minister out of this shared location while our new building is being constructed just one short block to the east (projected to be completed in 2026). Wesley has a long history of collaboration with The Found as our closest ministry partner on campus. We are excited to continue that collaboration during and beyond our time when we are temporarily located with them.

As we start this new adventure, we ask for your prayers for the challenges that are ahead. We also ask for your continued and renewed support. Suggestions, questions, or comments can be directed to me at glen@wesleyfoundation.org. Please keep an eye out for more emails and mailings as we dream big about how a new building can help Wesley be an even more vital spiritual home for students on campus.

**Grace and Peace to You All,
Pastor Glen**

The Wesley Legacy



For over 100 years, the Wesley Foundation has remained true to its motto - a home away from home. The Foundation continues to provide a supportive and nurturing environment where students can find comfort, guidance, and friendship.

Wesley's commitment to inclusivity and diversity has always been at the forefront of its mission. In the 1920s Wesley welcomed Chinese students into the fellowship at a time when they experienced substantial discrimination. By opening its doors to students of all races, Wesley Foundation challenged prejudice. That legacy continues today as students who have felt unwelcomed in other religious communities find a spiritual home at Wesley.

As we reflect on the past, we also look forward to the future. The Wesley Foundation's legacy is strong, and we cannot wait to see what lies ahead. With the ever-evolving needs of students, we strive to adapt and respond, ensuring that Wesley continues to be a beacon of support for generations to come with open hearts, open minds, and always open doors.



Proposed Addition to the
WESLEY FOUNDATION at BURDUE UNIVERSITY
WEST LA FAYETTE · INDIANA · *Scheme - A*
WesleyFoundation.org 19
1-22-54

...New Building Campaign...

With great prayer and enthusiasm, we have been working on the design of our new building at 122 Waldron St. Two different architecture firms have worked with us so far, with much work yet to be done. Stay in touch with suggestions and be on the lookout for more details as we work out a building design to enhance our ministry.

As mentioned on p. 8, we are discerning that now is the time to add a substantial residential component by adding a third and fourth floor to our new ministry center. To fully finance this enlarged vision, we will need generous investments from our alumni and supporters. Please begin to prayerfully consider how you can join others in making this vision a reality. In 2024 we will refine and share detailed designs and a capital campaign to make this enhanced ministry possible.

Thank you all for your unwavering support through Wesley's journey this far. We could not have achieved this without each and every one of you standing by our side. Let's embrace this new beginning with open hearts and minds as we shape a brighter future together!

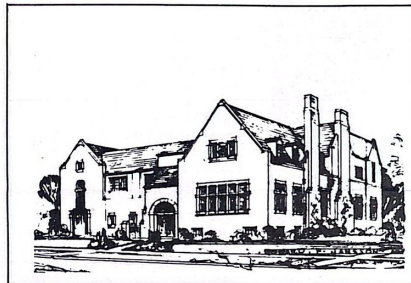
WESLEY FOUNDATION - PURDUE

NEWS BULLETIN

MAY 1956

West Lafayette, Indiana

NEW FACILITIES AT WESLEY



ARCHITECT'S DRAWING OF NEW ADDITION



FIRST STEP COMPLETED

Check out this archive from 1956! Wesley has gone through a lot of changes. We can't wait to see our journey continue to thrive.

At this time the building was undergoing \$130,000 worth of remodeling. They were using the remodeled sections by early December, 1968! Scan the link below to learn more about our history and our new building capital campaign.



Stay Connected

Wesley is embarking on a new chapter with our relocation to a new building. We're excited about the opportunities this move will bring and the chance to create an even better experience for our students. We're excited about the opportunities this move will bring and the chance "to create" closer bonds to God and friends. But we also understand that change can sometimes be challenging, and we want to ensure that you stay connected every step of the way.



One of the best ways to stay connected with Wesley is to ensure that you're always informed about what's happening. We will be providing regular updates and announcements about the progress of our new building, upcoming events, and any changes that may affect you. Be sure to subscribe to our newsletter and follow our social media channels to receive timely updates right in your inbox or feed.



Scan the QR Code to
get involved!

Wesley Foundation at Purdue
P.O.Box 2396
W Lafayette, IN 47996-2396

Address Service Requested

